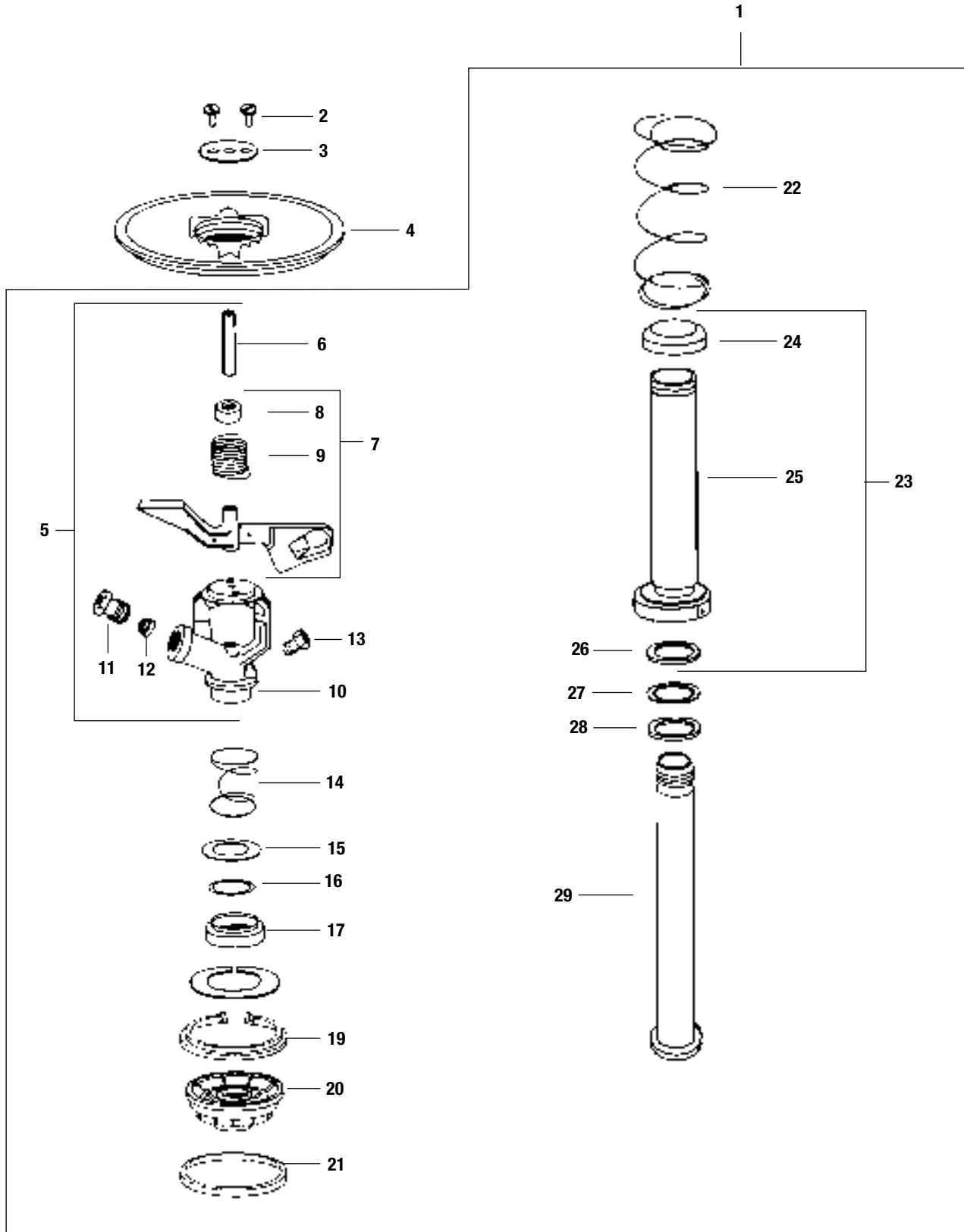


**51DR / 51DS / 51DH INTERNAL ASSEMBLY**



<b>Ref. Part Description</b>	<b>51DR</b>	<b>51DS</b>	<b>51DH</b>
<b>1 INTERNAL ASSEMBLY</b>	204130-xx-11.5	204130-xx-11.5	204130-xx-11.5
<b>COVER ASSEMBLY</b>			
2 Cover Screws, Standard (2)	200974	200974	200974
3 Retainer, Steel	200740	200740	200740
4 Plastic Cover	208227	208227	208227
<b>UPPER ASSEMBLY</b>			
5 Arm/Body Assembly	200132-18-11.5	200132-18-11.5	200132-18-11.5
6 Fulcrum Pin	200076	200076	200076
7 Arm Spring Assembly	203728	203728	203728
8 Arm Hood	200924	200924	200924
9 Arm Spring	202384	202384	202384
10 Body	200101	200101	200101
<b>NOZZLES</b> (Specify nozzle sizes when ordering)			
11 Plastic Range Nozzle	211203	211203	211203
12 Vane	201230	201230	201230
13 Drive Nozzle	201108	201108	201108
<b>BEARING ASSEMBLY</b>			
14 Bearing Spring	(A) (200029)	(A) (200029)	(A) (200029)
15 Steel Top Seal Washer	(A) (200030)	(A) (200030)	(A) (200030)
16 Teflon Top Seal Washer	(B) (200031)	(B) (200031)	(B) (200031)
17 Buna-N Guide Seal (Black)	(A) (200042)	(A) (200042)	(A) (200042)
19 Upper Snap Ring	208395	208395	208395
20 Bearing Guide, Plastic	207569	207569	207569
- Bearing Guide Ring	207415	207415	207415
21 Seal, Bearing Guide (Red)	211239	211239	211239
22 Retract Spring	201113	201113	201113
23 Bearing Sleeve Assembly	202068	202068	202068
24 Buna-N Lower Seal (Black)	(B) (200036)	(B) (200036)	(B) (200036)
25 Bearing Sleeve	(202049)	(202049)	(202049)
26 Wear Ring (Gold)	(B) (201608)	(B) (201608)	(B) (201608)
27 Teflon Speed Washer (White)	(B) (202169)	(B) (202169)	(B) (202169)
28 Buna-N Washer Seal (Gray)	(B) (201562)	(B) (201562)	(B) (201562)
29 Bearing Nipple	200037	200037	200037

(A) Included in Upper Bearing Spring Washer Kit # 203731.

(B) Included in Bearing Washer Kit # 203732.

Note: Part numbers enclosed in brackets ( ) are not available individually, but may be sold in assemblies or kits.